



# GAT MONTHLY MEMBERSHIP PROGRESS REPORT

Results as of: 6/30/2022

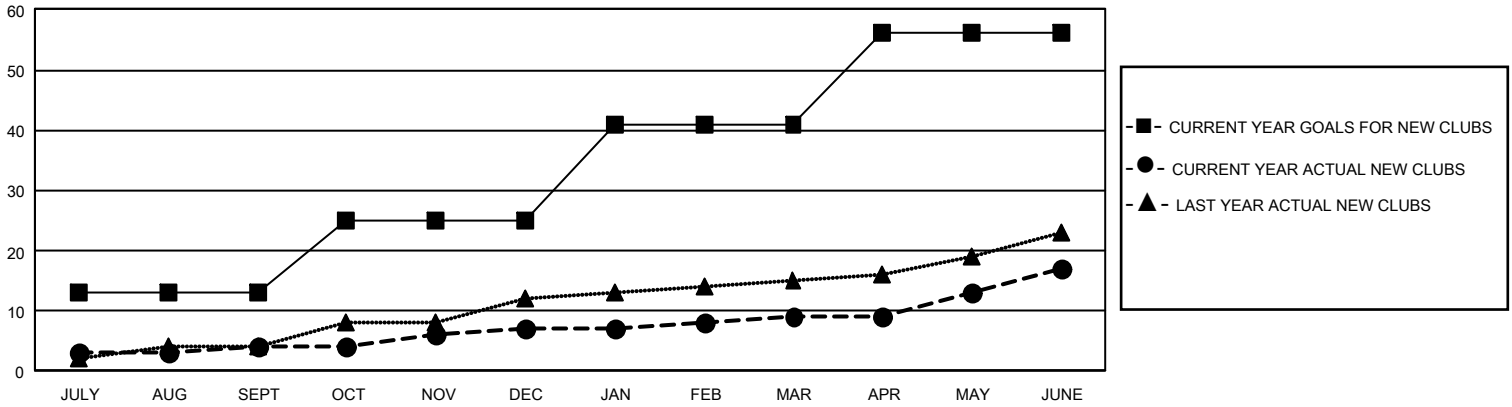
## GMT Constitutional Area 1, Group B

REPORT DOES NOT INCLUDE CLUBS IN UNDISTRICTED AREAS.

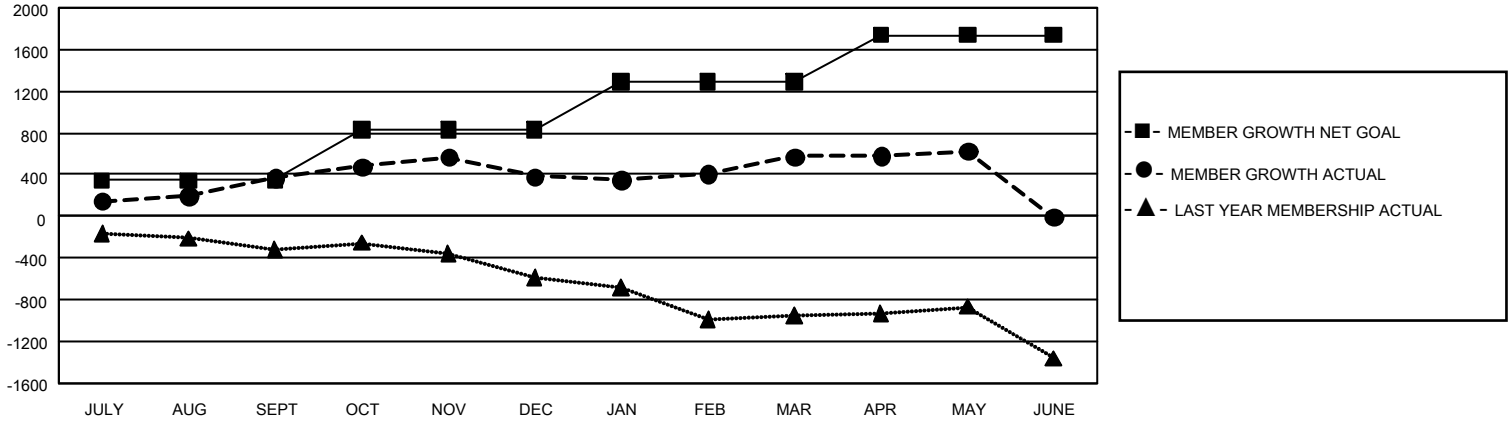
Clubs			
RESULTS FOR 2021-2022			
QUARTER	NEW CLUB GOAL	NEW CLUBS	DROPPED CLUBS
JULY/AUG/SEPT	39	4	16
OCT/NOV/DEC	36	3	14
JAN/FEB/MAR	48	2	9
APR/MAY/JUNE	45	8	12

Members			
RESULTS FOR 2021-2022			
QUARTER	MEMBER GROWTH NET GOAL	MEMBER GROWTH ACTUAL	DROPPED MEMBERS ACTUAL (including transfers)
JULY/AUG/SEPT	345	1,471	917
OCT/NOV/DEC	482	973	881
JAN/FEB/MAR	460	1,037	721
APR/MAY/JUNE	452	1,222	1,682

GOALS AND ACTUAL NEW CLUBS CUMULATIVE



GOALS AND ACTUAL MEMBERS CUMULATIVE



<b>DROPPED CLUBS: 51</b>	598 CLUBS OF 940 ADDED 1 OR MORE NEW MEMBERS	<b>GENDER DISTRIBUTION</b>	
		MALE 13,866 (58.50%) FEMALE 9,818 (41.42%) NON BINARY 2 (0.01%) PREFER NOT TO ANSWER 17 (0.07%)	
<b>DROPPED MEMBERS</b>		<a href="#">CLICK HERE FOR CUMULATIVE MEMBERSHIP DATA</a>	
DECEASED 384 CLUB CANCELLED 311 OTHER 3,506 <b>TOTAL 4,201</b>	TOTAL FAMILY UNIT MEMBERS 4,642 FAMILY MEMBERS PAYING HALF DUES 2,442		